



exquisite EVENTS
2020 EVENTS FACT SHEET

Emporium
HOTELS
SIMPLY *exquisite*

267 Grey Street South Brisbane | EmporiumHotels.com.au

SIMPLY *exquisite*





experience

AN EXQUISITE NEW STANDARD IN BOUTIQUE LUXURY

Experience an exquisite new standard in boutique luxury accommodation, exceptional dining and bespoke events at Emporium Hotel South Bank, Brisbane's cultural epicentre. From your initial entrance right up to the iconic rooftop and at every turn in between, each curated detail and handcrafted touch creates a sensory symphony that is bound to leave you with a lasting impression.

Bask in the comfort of your luxuriously appointed suite. Indulge at our exemplary bars and restaurants. Soak up the unrivalled atmosphere and spectacular views from the rooftop Terrace and infinity pool. Create lasting memories at one of our sought-after events, or add the wow-factor to your own event in our modern, purpose-built facilities. Or venture out for enriching encounters. Escape the ordinary to infinite possibilities.

Frangipani ballroom



Experience the magic in the grand, pillarless Frangipani Ballroom. A truly unique and beautiful 410sqm space featuring mirrored walls, a 4.3m ceiling and state-of-the-art lighting system with custom mapping.

ROOM NAME	Size (m2)	Ceiling	Natural Light	Ceremony	Cocktail	Banquet	Long Banquet	Cabaret	Theatre	Classroom	U-Shaped	Boardroom	Hollow Square
Frangipani Ballroom	410	4.3	Yes	-	400	260	216	208	360	198	-	-	-
Frangipani One or Three	137	4.3	Only Three	100	150	80	48	64	140	54	33	24	51
Frangipani - Two Rooms	272	4.3	Yes*	-	300	180	100	144	250	108	-	48	78



34

Conference rooms

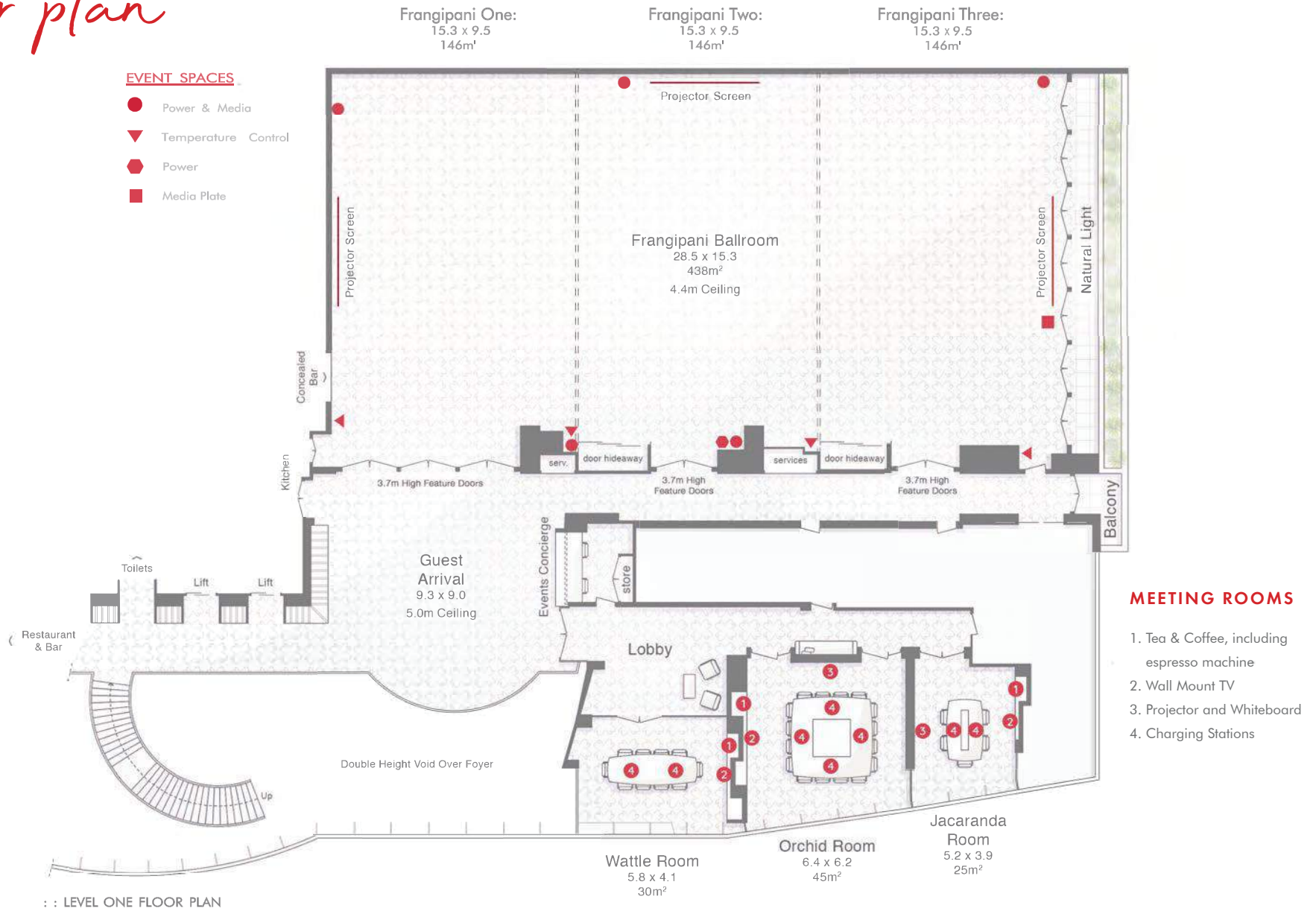
ORCHID 16 PAX
WATTLE 10 PAX
JACARANDA 8 PAX

Suitably located on the Level 1 conference floor and overlooking the heart of South Bank are three purpose built and light-filled boardrooms with seating capacity of up to 16 guests.

The rooms are fully equipped with executive leather chairs, the latest conferencing technologies and presentation systems as well as an espresso coffee pod machine and tea facilities.



Floor plan



Frangipani One:
15.3 x 9.5
146m²

Frangipani Two:
15.3 x 9.5
146m²

Frangipani Three:
15.3 x 9.5
146m²

Frangipani Ballroom
28.5 x 15.3
438m²
4.4m Ceiling

Guest Arrival
9.3 x 9.0
5.0m Ceiling

Lobby

Wattle Room
5.8 x 4.1
30m²

Orchid Room
6.4 x 6.2
45m²

Jacaranda Room
5.2 x 3.9
25m²

MEETING ROOMS

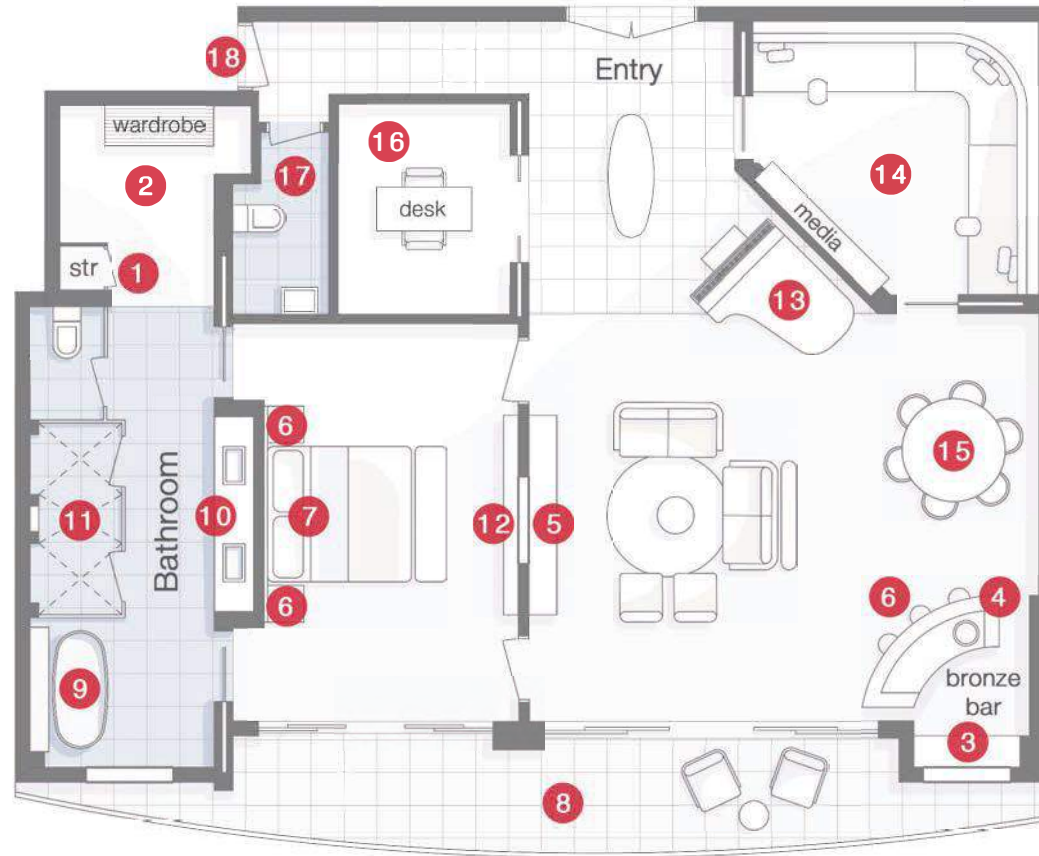
1. Tea & Coffee, including espresso machine
2. Wall Mount TV
3. Projector and Whiteboard
4. Charging Stations

Frangipani suite



Located on the 20th floor is the lusciously appointed, epitome of lavish style and comfort Frangipani Suite. Providing a superlative experience for the luxury traveller, the elegant Frangipani Suite welcomes its guests with a spectacularly formal marble floor double entry leading to a generous living space complete with a baby grand piano, double-sided fireplace, a handmade bronze bar with seating for three people, and a private balcony offering magnificent, uninterrupted views of the Brisbane River and the city skyline. Other features include an immaculately finished ensuite bathroom fully equipped with a freestanding bath, double marble shower and a white marble double vanity.

Floor plan



River & City Views

SUITE FEATURES

1. Safety deposit box, ironing board & closet
2. Robe, slippers & luggage wardrobe
3. Mini bar, tea & coffee facilities (inc. espresso machine) with Eurocave wine fridge
4. Bronze bar with sink & glassware
5. Double Sided 55" mirror finish television & Bose sound system
6. Phone & alarm
7. Sealy Dynasty king bed (inc. custom pillow menu)
8. Private open air balcony with river/ city views
9. Free-standing bath with river/ city views
10. Molton Brown toiletries & hairdryer
11. Dual Rain shower head
12. Double-sided fireplace
13. Baby grand piano
14. Karaoke/ media room
15. Dining / poker table
16. Study
17. Powder room
18. Entrance to interconnecting River City King Suite

Best in class

Experience an exquisite new standard in boutique luxury accommodation and award-winning service.

Escape to one of our 143 meticulously curated suites featuring handcrafted finishes and magnificent views.

Suite Type	Size (m2)	Inventory	Bedding Config
Vista King Suite	40	65	King
Vista Twin Suite	37.5	5	2 x King Singles
River City King Suite	45	52	King
River City Twin Suite	43	11	2 x Queen
Cabana Suite	54	3	King
Exquisite Suite	70	2	King
Emporium Suite	70	2	King
Frangipani Suite	145	1	King
Parklands Suite	786	1	4 Bedrooms



(Emporium Suite)

BARS & DINING *venues*



BELLE ÉPOQUE

PATISSERIE • BRASSERIE

signature

PIANO BAR

the Terrace




BE
BELLE ÉPOQUE
PATISSERIE • BRASSERIE

GROUND FLOOR

COCKTAIL 60 PAX | LONG BANQUET 30 PAX

Literally translating to “Beautiful Era”, Belle Époque pays homage to the stunning designs characteristic of France around the turn of the 1900s. As it was a period of peace and prosperity where culture flourished, Belle Époque offers an escape from the every day, and an opportunity to bask in the beauty of French finesse.

 @bellepoqueemporiumhotel | #simplyexquisite





signature

LEVEL ONE

RESTAURANT 60 PAX | LONG BANQUET 48 PAX


Perched on the mezzanine level above the hotel's Piano Bar, Signature Restaurant offers an elevated vantage point over South Brisbane and the striking hotel lobby. Signature is a welcome sanctuary, instantly drawing you in with plush furnishings and a harmonious burnt-orange and blush pink colour palette, while a 150-year-old stained glass window from Paris provides a whimsy hue.

From the striking backlit white onyx bar and polished brass walls to the bespoke ceiling installation featuring 3,000 hand-crafted glass baubles, the refined scattering of sparkle adds a sophisticated elegance. Reminiscent of a designer boutique, Signature's extensive wine collection is displayed in custom climate-controlled glass cabinets, providing an impressive backdrop to the restaurant; at the centre, clever design and barely-there frames showcase the Burgundy magnums as if suspended in mid-air in an eye-catching optical illusion.

PRIVATE DINING 12 PAX

Elevate your dining experience to a whole new level in Signature Restaurant's private dining room. Amidst the whimsy 150-year-old Parisian stained-glass window and curated wine display, up to 12 guests can experience the ultimate indulgence in this elegant, secluded enclave. With a perfectly placed window, draw the curtain to soak in the spectacle of our culinary masters conjuring their creations for a more interactive experience, or bask in the intimate privacy of this exclusive space.

No external distractions offers a truly heightened experience, allowing you to scintillate the senses and savour every moment.

 @signatureemporiumhotel | #simplyexquisite






PIANO BAR

GROUND LEVEL

COCKTAIL 100 PAX

In signature Emporium style, the bespoke design lays the foundation for everything that is distinctly different about Piano Bar. Traditional lobby bar – be gone; Piano Bar is a destination in its own right. Exuding old-world glamour, Piano Bar is a modern nod to the golden jazz era of the 1920s. Stepping through the frangipani emblazoned steel bi-fold doors, you'll be encased in the moody glow of sophisticated elegance. Dark mirrored walls reflect the ambiance from the tiered coffered ceiling and custom chandelier above and magnificent backlit smoky onyx bar.

Sip from vintage glassware as you relax in the grandeur of plush furnishings and the venue's stately grand piano, while classic films and unique imagery on the large digital display transport you to a bygone era.

 @pianobaremporiumhotel | #simplyexquisite






The Terrace

LEVEL 21

RESERVED AREA - COCKTAIL 40 PAX
MONDAY - THURSDAY BOOKINGS

Take your days and nights to new heights at the Terrace, with unrivalled views, world-class beverages and all-day dining at Brisbane's premier open-air rooftop bar & restaurant.

Looking for the perfect event space? At the Terrace rooftop bar & restaurant, you're in luxe. From business functions and lunches, fashion launches and suave soirees, the Terrace puts the oh! in oasis. With its plush resort/Euro day club vibe, lush tropical landscaping, elegant styling, and unrivalled views over Brisbane, the Terrace guarantees that desired wow-factor for any event or occasion. With a favourable North-Easterly aspect and bespoke operable roof, the Terrace is ideal day and night all year round. Celebrate your own special occasion, or secure the hottest tickets in town when we raise the stakes at our marquee events throughout the year. Cap off your event with our creative catering options from platters and grazing stations to customisable multi-course menus and world-class beverage selection.

 @theterraceemporiumhotel | #simplyexquisite









SIMPLY *exquisite*

267 Grey Street, South Brisbane | EmporiumHotels.com.au

ENQUIRIES

Please call: (07) 3556 3333 | events@emporiumhotels.com.au